

FACTSHEET

Waste Wise Cities Tool in Kep, Cambodia



- Step 1: Preparation
- Step 2: Household MSW Generation and Composition
- Step 3: Non-Household MSW Generation
- Step 4: MSW Received by Recovery Facilities and Control Level of Recovery Facilities
- Step 5: MSW Received by Disposal Facilities and Control Level of Disposals Facilities
- Step 6: Waste Composition at Disposal Facilities
- Step 7: Calculating Food Waste, Recycling, Plastic Leakage, Greenhouse Gas Emissions and Air Pollution

Kep city has the great potential for eco-tourism while the inadequate solid waste management is part of the underlying vulnerability to environmental hazards such as flooding and the damage of the terrestrial and marine ecosystems.

Solid waste management is the priority issue to promote the sustainable urbanisation in the city. With technical support from UN-Habitat and the use of Waste Wise City Tool, the city would better understand the most current situation of municipal solid waste in the city and guide better strategic planning.

Ms. Tith Sokha
Governor of Kep Municipality



City: **Kep**
Country: **Cambodia**

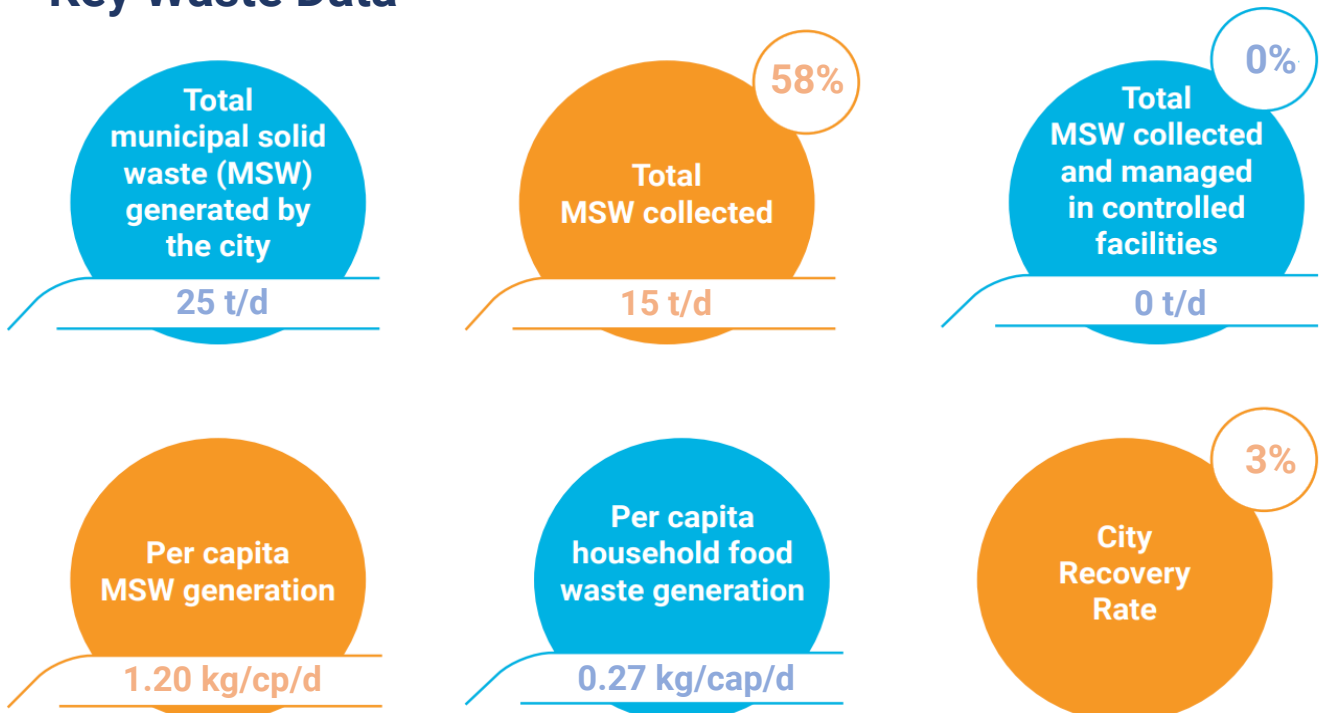


Population:
21,204 (2021)



Year of WaCT Survey:
2021

Key Waste Data



Household and non-household waste generation



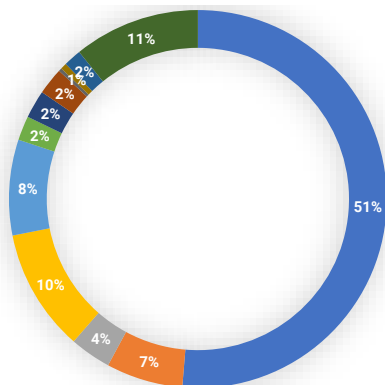
	Average household waste generation (kg/capita/day)	Total population	Total MSW generated by households (t/day)
High income	0.60	1,180	1
Middle income	0.54	16,708	9
Low income	0.43	3,316	1
TOTAL	0.53	21,204	11



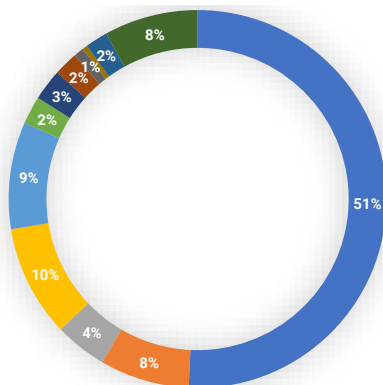
Total MSW generated from non-household sources (t/day): **14**
 calculated using proxy of 30 % of total MSW

Composition of waste at the households and at the disposal site

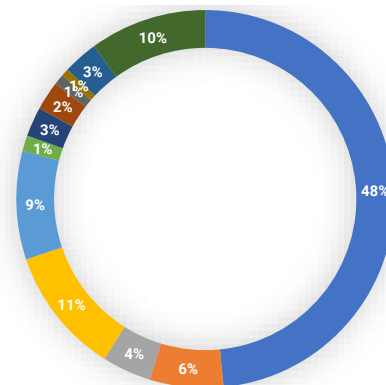
Household waste composition
higher income areas



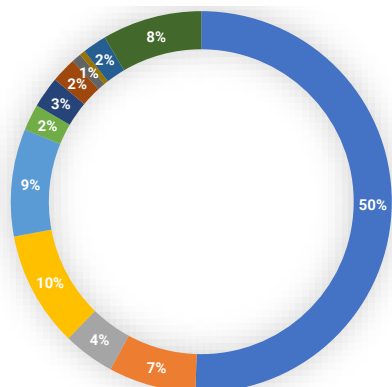
Household waste composition
middle income areas



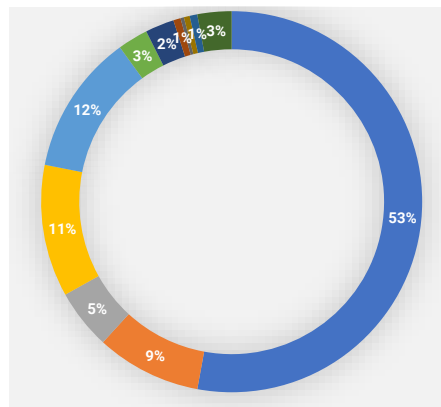
Household waste composition
lower income areas



Average household waste
composition



Waste composition at disposal site



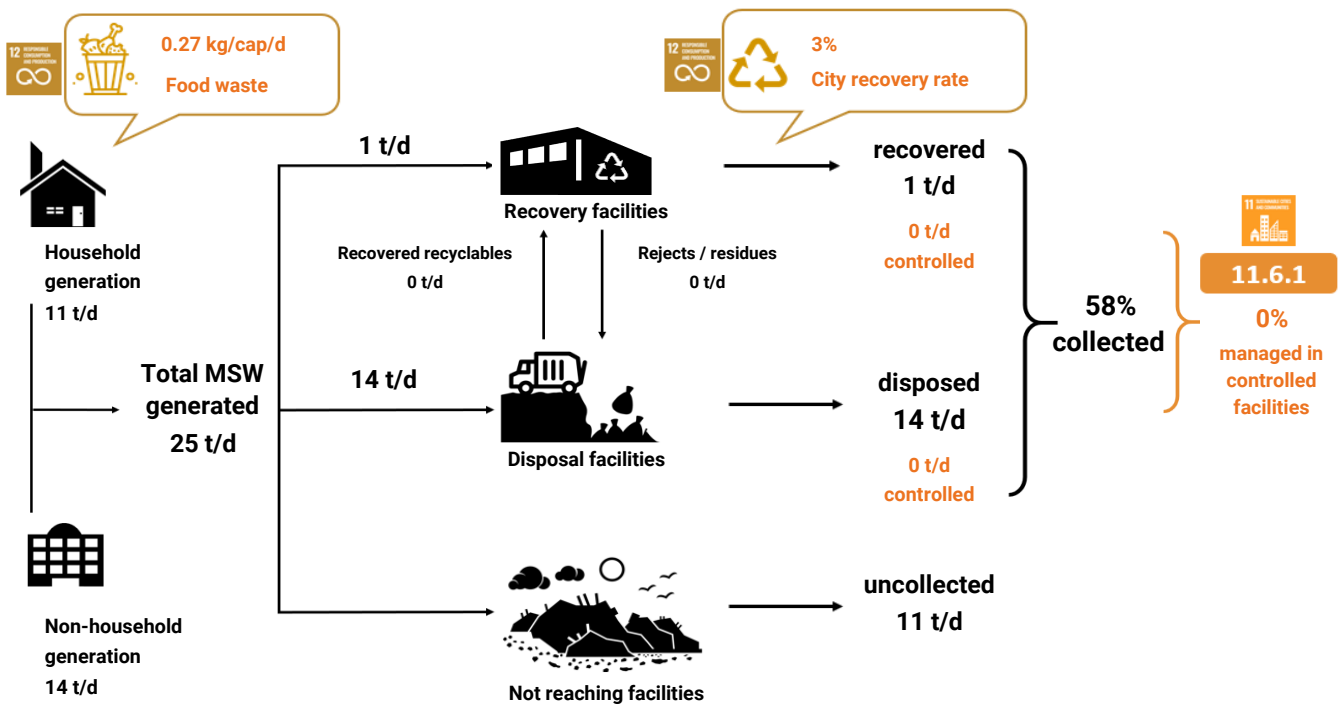
- Kitchen / canteen
- Garden / park
- Paper / cardboard
- Plastic film
- Plastics dense
- Metals
- Glass
- Textiles / shoes
- Wood (processed)
- Special wastes
- Composite products
- Other

Potential recyclables from households



Types	Recyclable waste generation from households (t/day)
Food waste	6
Plastic film	1
Plastic dense	1
Paper and cardboard	0
Glass	0
Metal	0
Total	8

WaCT Flow Chart



For more info and if interested in WaCT application contact the Waste Wise Cities Team at WasteWiseCities@un.org

UN HABITAT
FOR A BETTER URBAN FUTURE

**WASTE WISE
CITIES**

Andre Dzikus,
Chief Urban Basic Services Section

WasteWiseCities@un.org
#WasteWiseCities

P.O. Box 30030, Nairobi 00100, Kenya
T: +254-20-76263120
E: unhabitat-info@un.org

